



ZAVALA COUNTY OCTOBER 2022 NEWSLETTER

INSIDE THIS ISSUE:

- ANTHRACNOSE OF SPINACH
- AGRILIFE EVENTS
- 4-H ENROLLMENT
- 4-H MEETINGS
- EVENTS IN ZAVALA CO.
- 2022-2023 4-H CLUB OFFICERS
- UPCOMING PORSPECT SHOWS
- SEPTEMBER RECAP

IMPORTANT DATES:

10/8/22 SHOOTING SPORTS MEETING

10/8/22 CRYSTAL CITY 4-H PARK CLEAN UP

10/11/22 SHEEP AND GOAT **STATE VALIDATION**

10/12/22 PRIVATE WATER WELL TESTING

10/15/22 SHEEP AND GOAT **COUNTY VALIDATION**

10/22/22 BATESVILLE 4-H PARK CLEAN UP

10/27/22 ZAE BOARD MEETING

11/4/22 PRIVATE PESTICIDE APPLICATOR TRAINING

11/5/22 COUNTY 4-H WORKDAY AT SHOWBARN

11/12/22 SPINACH FESTIVAL

11/18/22 LAST DAY TO ORDER CLOVER

11/19/22 HOG **COUNTY VALIDATION**





Figure 1. Lesions typical of anthracnose. Note the tan color and fine black speckling in the lesion.

Anthracnose, a fungal disease caused by *Colletotrichum dematium* f. sp. *spinaciae*, causes significant losses to spinach crops in Texas and other spinach production areas. The symptoms initially occur as small, dark tan, often water-soaked abrasions that develop into large lesions (Fig 1). Eventually, multiple lesions expand and converge, covering large areas of the leaf.

Fungal material (inoculum) can survive as spores, mycelia, and in some species of *Colletotrichum*, sclerotia, which are tough, long-term survival structures that can occur on plant material or in the soil.

The primary sources of infection in the field are crop debris harboring inoculum, infected volunteers, or infested seed. New fungal spores from lesions are spread to neighboring foliage via water splash or wind-driven rain.

The environmental favorability for disease development increases as the duration of moisture on leaves and temperature increases. Optimal conditions include 24 or more hours of moisture

ANTHRACNOSE of SPINACH

K.A. Cochran*

and temperatures of 79 to 86°F. Being aware of recent weather conditions can help producers understand when the risk of loss is high and when to focus scouting efforts. Additionally, high-density planting can increase the retention of moisture on lower leaves under the surface of the leaf canopy, which can contribute to more severe epidemics.

If the weather becomes unfavorable for disease progression, diseased foliage may drop off the plant, and new healthy leaves can grow to produce a harvestable crop. In other cases, if the infection is extremely severe or weather conditions continue

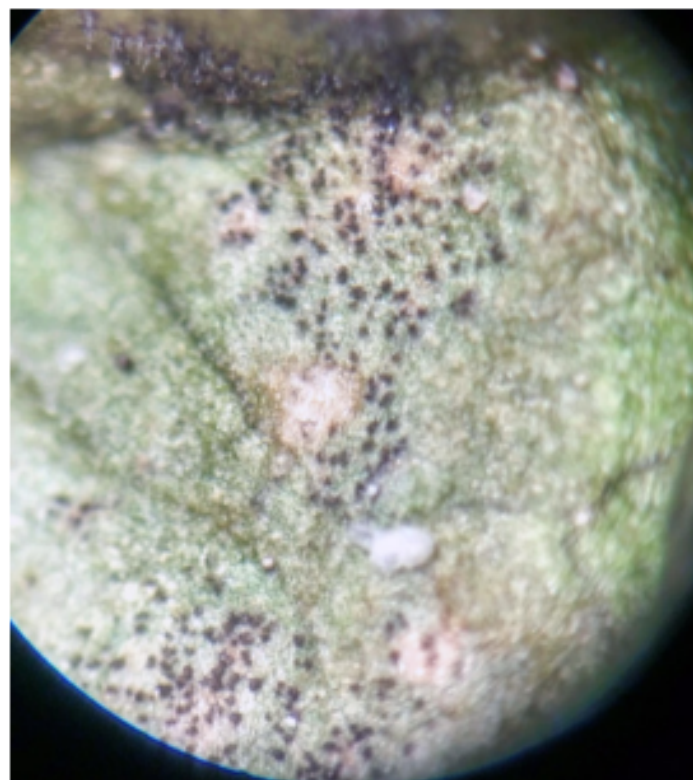


Figure 2. Several black acervuli on the surface of a leaf under a microscope, approximately 30x magnification.

* Assistant Prof. and Extension Specialist,
Kimberly.cochran@ag.tamu.edu, Office: 830-278-9151

to favor disease development for extended periods, entire crops can be lost. In commercial production, greater losses are associated with successive cuttings of spinach. These losses are likely due to the progression of the epidemic over time, open wounds on the plants, and increased distribution of inoculum by harvest equipment.

Under favorable conditions of warm temperatures and high moisture, lesions develop spore-producing structures called acervuli, which look like tiny black specs to the naked eye or under a low magnification hand lens (Fig. 2). Under higher magnification, you can often see a moist droplet of spores and whisker-like projections coming off the base of the acervuli (Fig. 3). These are diagnostic features used to help identify the pathogen causing the disease problem.

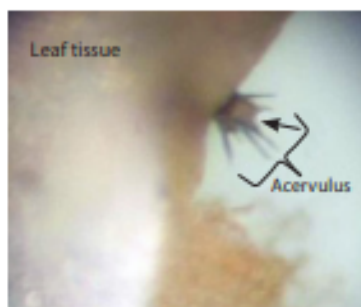


Figure 3. Side view of a single acervulus under a microscope, approximately 90x magnification. Note the protruding black whisker-like structures known as setae and the cream to salmon colored droplet of spore ooze (arrow).

Management for Commercial Producers:

Planting clean (pathogen-free) seed is important for disease prevention. Soil tillage practices that promote decomposition of crop residue will help reduce future sources of fungal inoculum in the field. Eliminating volunteer spinach and practicing 3-year crop rotation is also helpful in preventing and managing this disease. Thorough weed management can help reduce alternate hosts of this fungus. Sprinkler irrigation should be lowered in frequency or avoided if possible to reduce the spread of spores and humidity needed for

spore incubation. Frequent field scouting for small lesions, including parting the leaves to see underneath the top canopy of the foliage, is essential for catching epidemics early. Foliar fungicides recommended for white rust can be used for anthracnose when used according to the label. It should be noted that disease management with fungicide applications have been unsatisfactory in the Texas winter garden when conditions are highly favorable for disease development and when disease pressure is high, particularly in later cuttings. Consequently, fungicide applications should be made with respect to cost-benefit assessment for each scenario. Ideal fungicide application timing is before infection, rather than after disease symptoms are present. Thorough sanitation of harvest equipment is essential if an infested field has been harvested to prevent further spread. Adequate soil fertility should be maintained, as reduced fertility is associated with greater epidemic severity. No highly resistant varieties are commercially available at this time.

Management for Home Gardeners:

For homeowners, avoiding the use of sprinkler-style irrigation can help reduce the total number of hours of leaf wetness and humidity, making environmental conditions less favorable for disease development. If the epidemic is caught early, removing and disposing of symptomatic plants is suggested to reduce the fungal population. Thorough tillage and removal of crop debris will help reduce the amount of the pathogen that carries over to next season. In future plantings, increasing the spacing between plants will promote greater airflow and reduce available moisture. No resistant varieties are available at this time.

All photos by Dr. Kimberly Cochran

Texas A&M AgriLife Extension Service

AgriLifeExtension.tamu.edu

More Extension publications can be found at AgriLifeBookstore.org

Texas A&M AgriLife Extension provides equal opportunities in its programs and employment to all persons, regardless of race, color, sex, religion, national origin, disability, age, genetic information, veteran status, sexual orientation, or gender identity.

The Texas A&M University System, U.S. Department of Agriculture, and the County Commissioners Courts of Texas Cooperating.

Multicounty

Water Well Screening Day

TEXAS A&M
AGRILIFE
EXTENSION

HAVE YOU TESTED YOUR PRIVATE WATER WELL?

Private water wells should be tested annually. The Multi-County Water Screening Program is sponsored by the Texas A&M AgriLife Extension Service of Atascosa, Dimmit, Frio, McMullen, LaSalle, and Zavala counties.

The offices are hosting a water well screening on **October 12, 2022** to give area residents the opportunity to have their well water tested. **The cost is \$15.00 per sample.**

Samples will be collected on Wednesday, October 12, 2022 between 8:00 a.m. and 9:00 a.m. Well owners may pick up a sample bag and instructions from their County Extension Office.

- Atascosa County AgriLife Extension Office, 25 E. 5th Street, Leming, TX 78050
- Dimmit County AgriLife Extension Office, 539 Industrial Blvd., Carrizo Springs, TX 78834
- Frio County AgriLife Extension Office, 400 S. Pecan Street, Pearsall, TX 78061
- McMullen County AgriLife Extension Office, 604 River Street, Tilden, TX 78072
- Zavala County AgriLife Extension Office, 221 N 1st Ave, Crystal City, TX 78839
- La Salle County AgriLife Extension Office, 119 S. Front Street, Cotulla, TX 78014

Results will be available on **October 14, 2022** at your Local County Extension Office. The screening is presented by Texas A&M AgriLife Extension Service.

Samples screened for:

FECAL COLIFORM BACTERIA

Presence indicates that feces (bodily waste from humans or animals) may have contaminated the water. Water contaminated with this bacteria is more likely to have pathogens present that can cause diarrhea, cramps, nausea or other symptoms.

NITRATES

Levels above 10 ppm may cause infants, pregnant or lactating women, the elderly, and the immune-suppressed to be at risk for methemoglobinemia, a condition which inhibits the ability of blood to sufficient carry oxygen to tissues and cells.

SALINITY

Measured by Total Dissolved Solids (TDS). Water with high TDS levels may leave deposits and have a salty taste. Using water with high TDS for irrigation may damage the soil or plants.

HYDROCARBONS

Presence indicates that oil contamination has occurred.



Education programs of Texas AgriLife Extension Service are open to all people without regard to race, color, sex, disability, religion, age, or national origin.

Private Pesticide Applicator Training

November 4, 2022

8:00am-11:00am

Crystal City Nutrition Center

1210 N 7th Ave, Crystal City, TX 78839

RSVP by October 28, 2022

Questions? Contact Leslie Dominguez at (830) 374-2883 or

leslie.dominguez@ag.tamu.edu



The three hour training will give participants the needed information to take the private applicator license test which is administered by the Texas Department of Agriculture.

Cost of the training is **\$10.00**; Cash only please.

You are encouraged to participate if you need a Private Pesticide Applicator License. The Private Pesticide Applicator License is required by TDA for a person who uses or supervises the use of restricted and/or state limited pesticides to produce agriculture commodities.

4-H



ENROLLMENT NOW OPEN

The new 4-H year has officially begun

Youth that are 8 years old and in the 3rd grade
can begin enrollment

Grades K-2 or 5 years old to 7 years old can be in
Clover Kids

The Texas 4-H fee schedule is below:

- \$25.00 - Club Member Enrollment Discounted Fee - August 15 - October 31st
- \$30.00 - Club Member Enrollment Regular Fee - November 1 to the completion of 4-H year
- \$0.00 - Clover Kid Enrollment Fee
- \$10.00 - Adult Volunteer Application Fee



QUALITY COUNTS

enrollment Instructions

- 1** To begin, go to; <https://www.texaslivestockvalidation.com/qc/qcregister.aspx>
- 2** Register by entering your information, then click "Submit Registration."
- 3** Save the email from texasyouthlivestock@ag.tamu.edu for your records.
- 4** Click "Proceed to Curriculum," → **AgriLife Quality Counts Website.**
- 5** Click the blue **Add to Cart** button. *FREE COURSE!
- 6** Click **Create an Account** under the log-in button if you do not already have an account with AgriLife Learn.
- 7** Click "**View Cart**" and then click "**Proceed to Checkout.**"
- 8** Select the option that states, "**No, I want to purchase this course for myself.**"
- 9** Check the box next to ☒ "**I agree with the Terms of Use,**" then click Next.
- 10** To access your course, follow one of the 2 options below:
 - a. Click the "View my Order" button and then click on the link next to "Access Course:"
 - b. Navigate to the USER PROFILE icon in the top right corner of the screen and select "My Courses"
- 11** Select Quality Counts. → Choose your Age Bracket (As of Aug. 31. 2022)
- 12** Click "Launch Unit" to begin the course!
- 13** Once completed, click the blue "**Click here to Proceed to Test**" button.
- 14** Once you pass the Exam, your Quality Counts number will appear at the bottom of the page.
You will also receive an email from texasyouthlivestock@ag.tamu.edu containing your QC #
- 15** **Congratulations!** You have completed the Quality Counts journey!

<https://texasyouthlivestock.com>



PLEASE JOIN US FOR THE FIRST ZAVALA COUNTY SHOOTING SPORTS 4-H MEETING

**LOCATION: ZAVALA COUNTY
SHOW BARN (CRYSTAL CITY)**

DATE: OCTOBER 8, 2022

TIME: 9:00 AM

**YOUTH MUST BE ENROLLED ON 4-H
ONLINE AND MUST BE FROM THE AGES
OF 8-18 YEARS OLD**



**TEXAS A&M
AGRI LIFE
EXTENSION**



ZAVALA COUNTY 4-H CLUB MEETINGS

BATESVILLE 4-H CLUB OFFICER TRAINING
OCTOBER 6TH- 6 PM
@ BATESVILLE SCHOOL CAFETERIA

**SHOOTING SPORTS MEETING
(RIFLE AND ARCHERY)**
OCTOBER 8TH- 9 AM
@ CRYSTAL CITY- ZAE SHOW BARN

LA PRYOR 4-H CLUB MEETING
OCTOBER 12TH- 6PM
@ LA PRYOR SCHOOL CAFETERIA

CRYSTAL CITY 4-H CLUB MEETING
OCTOBER 16TH- 2 PM
@ COMMISSIONER'S COURT ROOM

CRYSTAL CITY CLOVER BUDS MEETING
OCTOBER 16TH- 5:30 PM
@ CRYSTAL CITY NUTRITION CENTER

BATESVILLE 4-H CLUB MEETING
OCTOBER 25TH- 6 PM
@BATESVILLE SCHOOL CAFETERIA



2022



ENTOMOLOGY MULTICOUNTY WORKSHOP



WHEN: OCTOBER 5, 2022

TIME: 5:30 PM



LOCATION: UVALDE COUNTY FAIRPLEX

122 VETERANS LN, UVALDE, TX, 78801

OR VIRTUAL VIA MICROSOFT TEAMS

LINK WILL BE SENT ONCE RSVP



PLEASE RSVP WITH UVALDE COUNTY:

830-278-6661

*OPEN TO UVALDE, ZAVALA, MEDINA, DIMMIT, KINNEY
COUNTIES*

4-H MEMBERS MUST BE ENROLLED ON 4-H ONLINE



TEXAS A&M
AGRILIFE
EXTENSION

Thirsty Cactus Ranch

1st Annual Pumpkin Patch

Come join us for pictures, family fun,
food and refreshments!

Opens
October 1st

Hours of Operation

Oct 1st - Nov 5th

Friday 6pm-9:30pm

Saturday 12pm-9:30pm

Sunday 1pm-7:30pm

Children \$10 free mini pumpkin
included

Adults \$5 18 & OVER

Children under 1year FREE

Location:

4901 FM1436

La Pryor TX 78872



ZAVALA COUNTY SHERIFF'S OFFICE

PRESENTS



TRUNK OR TREAT

29 OCTOBER
6:30PM

200 EAST UVALDE ST.
NORTH SIDE OF
COURTHOUSE

2022-2023 LA PRYOR 4-H CLUB OFFICERS



**LORENA CASTILLO (PRESIDENT), ASHLYN
MARTINEZ (VICE-PRESIDENT), MCKYNZE RANGEL
(SECRETARY), JERICKO CERVANTEZ (TREASURER),
AND ARANDA VAZQUEZ (REPORTER)**

TEXAS A&M
AGRILIFE
EXTENSION



2022-2023 CRYSTAL CITY 4-H CLUB OFFICERS



ADYSELA SALAS (PRESIDENT), JESSE BENAVIDES (VICE-PRESIDENT), CARLOS MEDINA (SECRETARY), ELIAN CARRASCO (TREASURER), AND EHMMA ONTIVEROS (REPORTER), MATTHEW ESCOBAR (PARLIAMENTARIAN)

TEXAS A&M
AGRILIFE
EXTENSION





Tyler Bowman Memorial Prospect Show October 22, 2022



For more information contact
Terry Bowman @830-486-7378
or Karla Bowman @830-486-7379
or email us at
tylerbowmanmemorial@gmail.com.

Judge: TBA

Location: Uvalde County Fairplex
215 Veterans Lane, Uvalde, TX 78801

Entry Fee: \$40

Early Bird Special: \$30

Mailed to: Tyler Bowman Memorial
68 CR 106, Uvalde TX 78801

Postmark Deadline: Oct 1, 2022

Cash or money orders only except on Early Bird
entries

NO REFUNDS

NOT A SANCTIONED SHOW

- Blow & Go Show
- Exhibitor Eligibility – 12th grade and younger
- Bring your own shavings for stalls
- You may show off your trailer
- Food Concession Available
- 50/50 Raffle & Ticket Drop Raffle at show
- Generators welcome & encouraged
- Fairplex RV hookup spots available—
(830) 591-9040

SCHEDULE OF EVENTS

Friday, October 21st

1:00 - 10:00 pm – may begin moving in – not required – no night security

Saturday, October 22nd

Pigs & Steers

7:00 - 9:00 am—Weight/Class Cards due
Judge has discretion to reclassify
5 lb weigh back for pigs/5% for steers

10:00 am – Pig Showmanship (Senior, Junior,
& PeeWee)

Pig Show to immediately follow Pig
Showmanship (Duroc, Hamp, OPB, York, Dark
Cross, Light Cross)

Steer Showmanship (Senior, Junior, &
PeeWee) to immediately follow Pig Show

Steer Show to immediately follow Steer
Showmanship (American, British, Exotic)

Lambs & Goats

12:30 - 1:30 pm—Weight/Class Cards due
Judge has discretion to reclassify
5 lb weigh back

Lamb Showmanship (Senior, Junior,
& PeeWee)—will not start before 2:30 pm

Lamb Show to immediately follow Lamb
Showmanship (FW, FWX, SDown, Dorper, MW)

Goat Showmanship (Senior, Junior, & PeeWee)
to immediately follow Lamb Show

Goat Show to immediately follow Goat
Showmanship (Does & Wethers will show
together)

Buckles for Grand Champion & Reserve Grand Champion.
Prizes for Breed Champion & Reserve Breed Champion.

JASPER TRIPLITT MEMORIAL



LAMB & GOAT PROSPECT SHOW



LASALLE COUNTY FAIRGROUNDS | 300 ENGINEER LN, COTULLA, TX 78014

OCTOBER 29, 2022



20 BUCKLES AWARDED

INCLUDING GRAND & RESERVE OVERALL,
DIVISION WINNERS, & SHOWMANSHIP

CONCESSION STAND AVAILABLE!



LAMB

BUCKLES TO GRAND
CHAMPION, RESERVE GRAND,
& DIVISION WINNERS

DORPER, SOUTHDOWN,
FINEWool, FW CROSS, &
MEDIUM WOOL

JUDGE

DAVID GARRETT

SCHRANK SHOW GOATS

SHOWMANSHIP

PEE WEE, SR. 9TH-12TH GRADE, INT.
6TH-8TH GRADE, JR. 3RD-5TH GRADE

GOATS

BUCKLES TO GRAND
CHAMPION, RESERVE GRAND,
& DIVISION WINNERS

LIGHT WT, MEDIUM WT, &
HEAVY WT

ENTRY FEE: \$25 PER HEAD

\$5 ENTRY FEE FOR SHOWMANSHIP

BOOKS OPEN 7-9 AM

GOAT SHOWMANSHIP STARTS AT 9:30 AM WITH SR, INTERMEDIATE, JR, PEE WEE FOLLOWED BY GOAT SHOW
LAMB SHOWMANSHIP WILL BEGIN AFTER THE CONCLUSION OF THE GOAT SHOW

TURN IN YOUR OWN WEIGHT CARDS (4% WEIGH BACK)

1ST AND 2ND PLACE ANIMALS WILL BE WEIGHED BACK

PENS & WASH RACK AVAILABLE BUT LIMITED ELECTRICITY SO GENERATORS ENCOURAGED

FOR QUESTIONS CALL/TEXT AMANDA TRIPLITT @ 956-285-7886

ALL PROCEEDS TO BENEFIT THE JASPER W, TRIPLITT MEMORIAL ORGANIZATION (5501C3
PENDING) PROVIDING AGRICULTURAL EDUCATIONAL OPPORTUNITIES THROUGH CLINICS &
SEMINARS TO SCHOOL AGED YOUTH & PROVIDING SCHOLARSHIPS FOR SECONDARY
EDUCATION

Guadalupe County Trophy Hunt

Saturday, November 5, 2022

FOLLOWING OPEN SEASON LAMB & GOAT SHOW

Marion Country Church Arena

1005 W FM 78

Marion, Tx



Lamb and Goat Show

WEIGHT CARDS DUE 12:30 PM-- SHOW STARTS 30 MIN AFTER OPEN SEASON

SCALES AVAILABLE GRAND AND RESERVE WILL BE WEIGHED BACK

5 LBS LAMBS 4LBS GOATS

TROPHIES FOR BREED CHAMPIONS

BUCKLES FOR GRAND AND RESERVE CHAMPIONS

AND SHOWMANSHIP (PEEWEE, JUNIOR, INTERMEDIATE, SENIOR)

OLD TIMERS SHOWMANSHIP

GUADALUPE SHOOTOUT PAYS LOCAL KIDS AT GCYS!

LIMITED PENS AVAILABLE (NO SHAVINGS ALLOWED)

ENTRY FEE: \$40 ONE RING

SHOW OUT OF TRAILERS

CONCESSIONS ON SITE

CONTACT INFO::

TILDEN COX 830-660-0176

AUDRA SCHULZ 830-660-6351

on FB @guadtrophyhunt

JUDGES:

TBA goats

TBA lambs

PRIZES PRIZES PRIZES!

**WE WILL AWARD CASH, RIBBONS, TROPHIES, BUCKLES,
TACK, AND MORE**

RAFFLE DRAWING BETWEEN SHOWS!

2022 ROEL GONZALEZ

FALL CLASSIC MEMORIAL PROSPECT SHOW



SHOW SUPPLY
TRAILER ON SITE!



LOTS OF PRIZES
AWARDED!

NOVEMBER 12, 2022

WEBB COUNTY FAIR GROUNDS | HWY 59 BUCKLES & BANNERS AWARDED RING B

Buckles for Grand Champions & Reserve Grand Champions

Banners for Division Winners Lambs | Goats

Lambs:

Southdown | Finewool
Finewool Cross | Medium

Goats:

Light Weight
Medium Weight | Heavy Weight

2 RINGS A&B | SHOWS WILL RUN SIMULTANEOUSLY

Entry Ring A: \$30/Head

Ring A&B: \$50/Head

CASH | CHECK

Showmanship: \$5 Cash at Gate



Scan QR Code for Registration

Check-In & Weigh-In @

7:30 am – 9:30 am

Showmanship Starts @ 10:30 am

Lamb/Goat Show Immediately

Following Showmanship

Must Show in Ring A to Show in Ring B

Ring A will Award prizes for Breed | Reserve Breed | Grand Champion | Reserve Grand |
Showmanship Champions

Concession Stand onsite serving Breakfast, Lunch, Drinks, and Snacks

For Questions Contact:

Joseph Garcia (956) 693-3091

Judges:

Austin Nauman & Sierra Nauman

**All Proceeds will go to the L.I.F.E. Livestock Committee Fund in which
several awards are given to graduating seniors in Webb County.**

SEPTEMBER RECAP



THANK YOU TEXAS AGRI WOMEN (UVALDE CHAPTER)
AND ZAVALA COUNTY STAKEHOLDERS FOR YOUR
GENEROUS DONATIONS TOWARDS THE ZAVALA 4-H
CLUBS

SEPTEMBER RECAP



**THANK YOU RIO GRANDE ELECTRIC CO-OP
FOR YOUR GENEROUS DONATIONS
TOWARDS THE ZAVALA 4-H CLUBS**



CONTACT INFORMATION :

**ZAVALA COUNTY OFFICE
OFFICE: (830) 374-2883
FAX: (830) 374-3351
ZAVALA-TX@TAMU.EDU**

**LESLIE DOMINGUEZ
COUNTY EXTENSION AGENT -
AGRICULTURE AND NATURAL
RESOURCES**

- **COUNTY EXTENSION AGENT (CEA)
(830) 374-2883
LESLIE.DOMINGUEZ@AG.TAMU.EDU**

**CARISSA MUNOZ
EXTENSION AGENT - BETTER LIVING
FOR TEXANS**

- **EXTENSION AGENT
(830) 374-2883
CARISSA.MUNOZ@AG.TAMU.EDU**

**MARIANA VARGAS
ADMINISTRATIVE
ASSISTANT/OFFICE MANAGER**

- **OFFICE MANAGER**
- **SUPPORT STAFF
(830) 374-2883
MARIANA.VARGAS@AG.TAMU.EDU**

