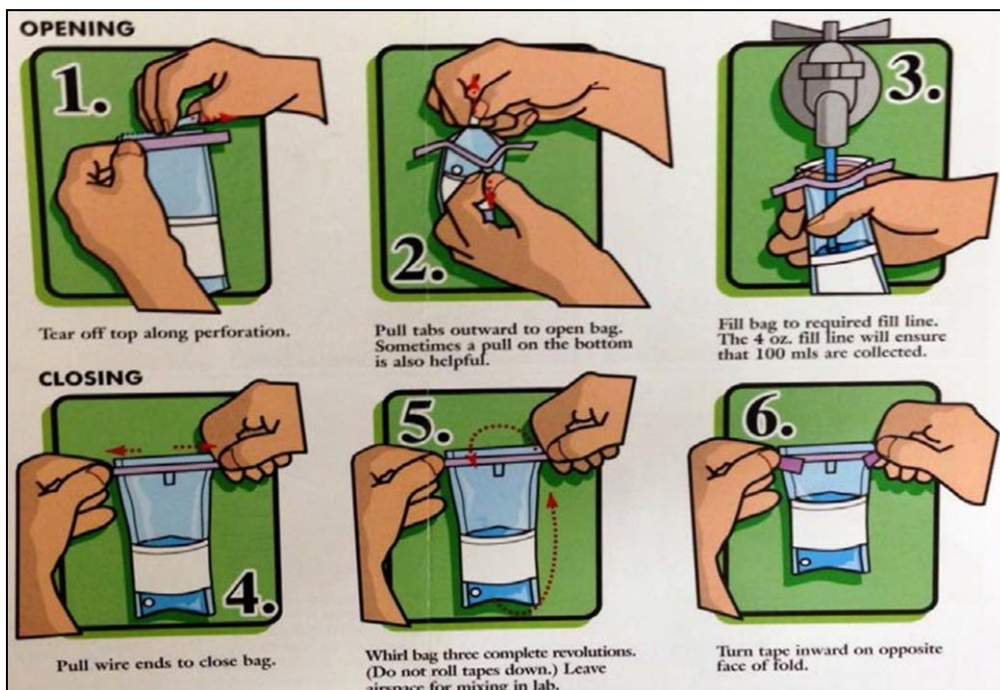


Instructions for Collecting and Submitting Water Samples for Screening

- Wash your hands.
- Use a faucet as close to the well as possible for making the collection. If an inside faucet is used, remove the aerator on the end of the faucet before making the collection.
- Rinse and dry the exterior of the faucet to prevent exterior contamination of your water sample. If possible, wipe off with a Chlorox-type towelette or paper towel wetted with a light bleach solution to kill any bacteria present on the faucet. **Allow the solution to dry before sampling.**
- Turn on the water full force and let it run at full force for two minutes.
Reduce the water flow to a small stream.
- Tear off the perforated strip above the yellow twist ties from the top of the bag. Grasp the small white tabs on the side of the water-sampling bag and pull the bag open (**be careful not to touch the inside of the bag with your fingers**).
- Holding the bag by the yellow twist ties, fill the sampling bag three-fourths full and then twirl the bag top over bottom to close it. Some water may leak out, but don't worry. Tie the twist ties together.



Please Note: Samples should be collected within 24 hours before the training to ensure accurate results.